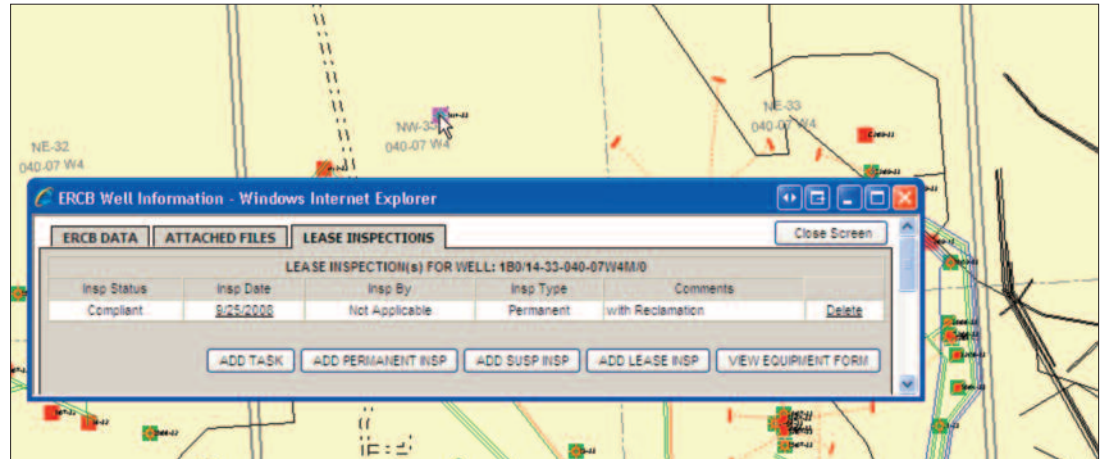


Task Management



Well information including lease inspection data displayed in AbaData.

Task Management

Essentially, Task Management provides a second AbaData interface – a place where users can create reports, print or upload forms or assign tasks separate from the map page.

Use Task Management to generate reports on proprietary data such as wells, facilities or inspections – or create a custom component that tracks lease inspections and pipeline amendments. Users can download, complete and upload an inspection form, mark an assigned task as complete, then view the location on the map page.

All of this is accomplished through an uncluttered, easy-to-access Web-based interface.

Use Case

Husky Oil Operations Limited has made the Task Management component a critical part of the company's day-to-day data management and regulatory compliance processes.

Armed with a list of list of wells in a Husky Area Management Unit, an operator could either create a report or check the color-coded icons on the map page to determine

which leases were compliant, and which were either non-compliant or in need of inspection.

The operator could then visit the site, perform the inspection and required compliance tasks, enter the relevant data through the AbaData Web or offline interface and upload the form.

Because Husky has embraced the customizable aspect of AbaData, the operator could also view company business unit boundaries and survey plans on the map screen.

A supervisor or manager could then generate a report comparing business unit compliance levels – data essential to forming important business decisions.

Essential Features

- Task Management interface for quick report generation, task assignment and access to corporate forms
- Map page with custom display and quick access to mapped systems
- Colour-coded compliance status icons for wells, pipelines and facilities
- Proprietary data such as inspection sites and survey plans can be included

TRUSTED, RELIABLE

**DIGITAL MAPPING
SOLUTIONS**